

Standard Preparation 1200 mm Sink with 1 Bowl & Right Drain

ITEM # _____

MODEL # _____

NAME # _____

SIS # _____

AIA # _____

**132804 (LG1216DXPN)**Sink unit with 1 bowl
600x500mm and right hand
drainer, 1200mm

Short Form Specification

Item No.

Made from 304 AISI stainless steel. The 50mm high worktop in 304 AISI stainless steel, 1mm in thickness, is sound-deadened and has an overflow rim and welded corners. Integral rear upstand, h=100mm, with 8mm radius. All-round apron. Square section legs 40x40mm on 1" height-adjustable feet (+/-20mm)

Bowl mm600x500x300h with overflow pipe and 2" drain hole; right hand drainer.

Construction

- 50 mm worktop in 304 AISI stainless steel, 10/10 in thickness with overflow rim along the top.
- Square section legs and 40 mm height-adjustable feet in 304 AISI stainless steel.
- Sink tops easily slotted onto the legs and taps are easily installed from the rear.
- Delivered in knock-down package.
- Wide range of taps are available to suit every need.
- Drainage area suitable for drying operations
- 100 mm upstand with 10 mm radiused corner and 13 mm deep, designed to be used against a wall.

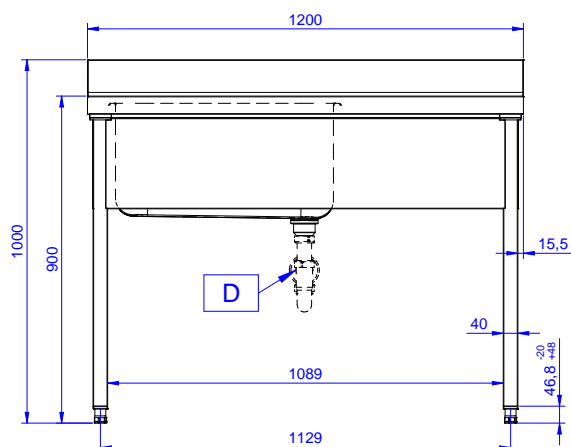
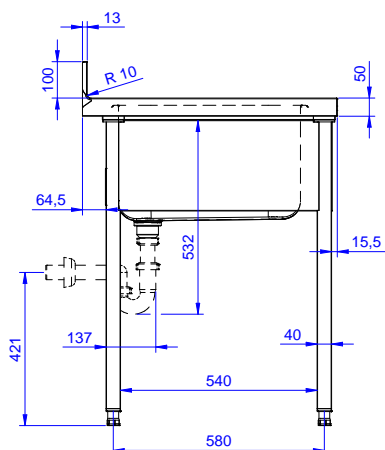
Optional Accessories

- Lower shelf for 1200mm tables and sinks and for 1800 mm undercounter dishwasher sinks PNC 855145 ☐
- Set of 4 wheels (2 with brake) d. 100mm for tables and sinks (total height on wheels= 993 mm) PNC 855150 ☐
- 3-sided underframe for 1200mm tables PNC 855152 ☐
- Elbow operated mixer tap with spout, 3/4" single hole PNC 855322 ☐
- Elbow operated mixer tap short spout, 3/4" single hole PNC 855323 ☐
- Foot operated Mixer tap with spout & with hot&cold pedals, 3/4" PNC 855328 ☐
- Elbow operated mixer tap with spout, 3/4" single hole PNC 855374 ☐
- Elbow operated mixer tap with short spout, 3/4" single hole PNC 855375 ☐
- Single hole deck mounted mixing temperature monoblock faucet PNC 855382 ☐
- Single hole deck mounted extra robust pot filling mixing temperature faucet PNC 855383 ☐
- Single hole deck mounted mixing temperature faucet with short spout PNC 855384 ☐
- Single hole deck mounted mixing temperature pre-rinse unit PNC 855385 ☐
- Single hole deck mounted elbow operated mixing temperature faucet with pre-rinse unit PNC 855386 ☐
- Single hole deck mounted riser add-on mixing temperature faucet with pre-rinse unit PNC 855387 ☐

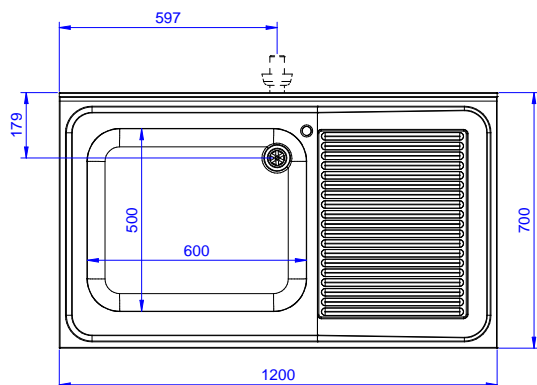
APPROVAL: _____

- Single hole deck mounted elbow operated mixing temperature faucet with short pre-rinse unit PNC 855388 ☐
- Single hole deck mounted riser add-on mixing temperature faucet with pre-rinse unit PNC 855389 ☐
- Single hole deck mounted mixing temperature faucet with pre-rinse unit PNC 855390 ☐
- Floor fastening kit for 2 square legs PNC 865386 ☐
- Single plastic drain syphon 2" for sinks PNC 895313 ☐

Standard Preparation 1200 mm Sink with 1 Bowl & Right Drain

Front

Side


D = Drain

Top


Key Information:

External dimensions, Width:

132804 (LG1216DXPN) 1200 mm

External dimensions, Depth:

700 mm

External dimensions, Height:

1000 mm

Upstand Dimensions, Height:

100 mm

Upstand Dimensions, Depth:

13 mm

Upstand Dimensions, Radius:

R=10

Bowls number

1

Bowl dimensions

600x500xH320

Worktop thickness:

50 mm

Net weight:

42 kg

Standard Preparation 1200 mm Sink with 1 Bowl & Right Drain

The company reserves the right to make modifications to the products without prior notice. All information correct at time of printing.

2025.04.18